

# Enterprise Change Management (ECM) Lab

Learn how to deploy change management –instructor-led, online training program from Prosci

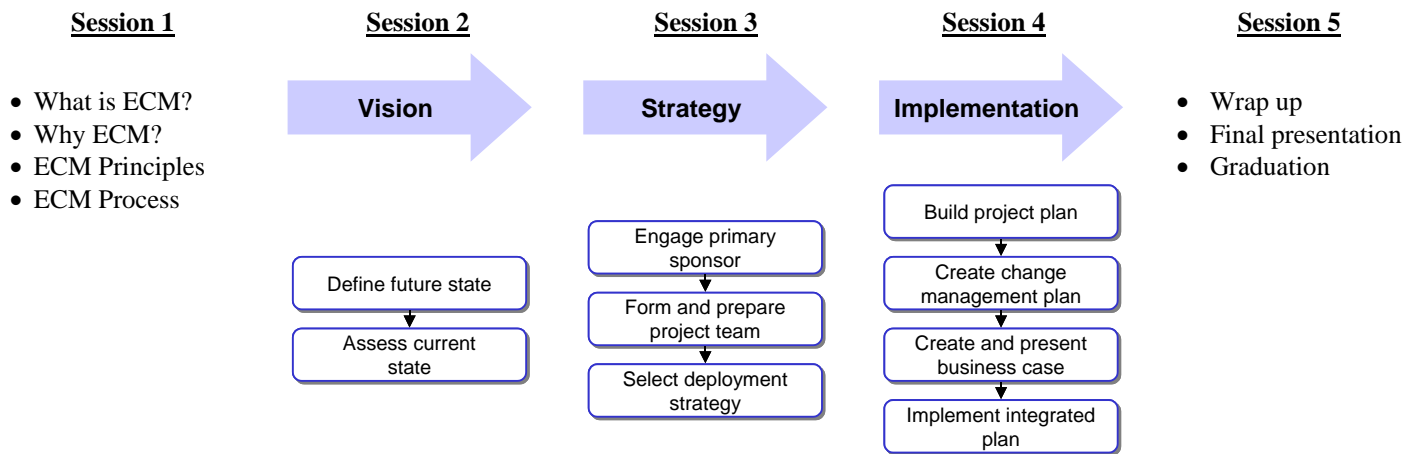
## How is ECM Lab conducted?

In 2005, Prosci took on new research and development in the area of Enterprise Change Management – the building of change management competencies throughout an organization. A special research study with over 80 participants showed key lessons and best practices. Prosci hosted the first ever ECM Summit in November 2005 to examine the issue with sixteen business leaders from a variety of industries and organizations. The ECM Lab is Prosci and the Change Management Learning Center’s online learning program designed to transfer our knowledge, process and approach to ECM.

The ECM Lab has two components:

1. **Sessions** –instructor-led, live presentations and discussions. Each session lasts one to two hours.
2. **Labs** – work that is completed in-between the live sessions on your specific organization, including assessments, templates and worksheets.

## Structure of ECM Lab



Prosci’s ECM Deployment Process

## ECM Lab Materials

### ECM Lab pre-reading:

Provides the necessary background and foundation for the ECM Lab. The pre-reading is spiral bound and shipped along with your other course materials. ECM Lab pre-reading includes:

- Welcome letter and introduction
- Excerpt from the new ADKAR book
- Tutorial describing the Change Management Process
- Maturity Model article
- ECM benchmarking report and whitepapers

### ECM Lab binders:

The course material you use during the ECM Lab comes in two binders. The first binder has sections for each live Session and the Lab work to be completed between sessions. The second binder includes notes pages with the slides used during the instructor-led portion of the program.

### ECM Lab website:

A special website for participants includes access to online presentations and downloads.

## Pricing and schedule:

**Program cost:** \$4000

**Materials cost:** \$250 per person (Prosci 3-day certification is prerequisite)

The pricing structure is designed to encourage you to bring more than one person from your organization, so you can work together to complete the Lab work specific for your organization. You are also responsible for shipping charges of materials (billed at cost). Contact Tim Creasey at 970-203-9332 or [tcreasey@prosci.com](mailto:tcreasey@prosci.com) to register or learn more. You can also visit the ECM Lab website: [www.change-management.com/ecmlab.htm](http://www.change-management.com/ecmlab.htm)

**Schedule:** When you begin the ECM Lab, you will be assigned a former executive instructor and set a schedule that works for both you and the instructor. You should estimate around a week for the work done during the Labs in between the instructor-led sessions.